

**CT DEEP 2019  
FISHING REPORT NUMBER 3  
5/2/2019**



Rainbow Trout (*Oncorhynchus mykiss*)



YOU CAN FIND US DIRECTLY ON FACEBOOK. This page features a variety of information on fishing, hunting, and wildlife watching in Connecticut. The address is [www.facebook.com/CTFishandWildlife](http://www.facebook.com/CTFishandWildlife).

**SHARE THE EXPERIENCE**  
Take someone fishing

**INLAND REPORT**

Get the latest on our Trout Stocking through

- Daily Facebook Posts ([@CTFISHANDWILDLIFE](https://www.facebook.com/CTFISHANDWILDLIFE))
- Current Stocking Report (on our [webpage](#))
- [Interactive Trout Stocking Map](#)
- See last year's [stocking numbers](#)

Providers of some of the information in this report included **Candlewood Lake Bait & Tackle, Captain Morgan's Bait & Tackle, The Fish Connection, JT's Fly Shop, Yankee Outfitters, CTFisherman.com, and a number of bass fishing clubs & organizations.**

**TROUT- RIVERS & STREAMS** - Conditions are improving for trout fishing in most areas. Keep in mind that difficult conditions, meaning high flows and cool water temperatures, mean that there are still plenty of stocked trout waiting for anglers (**and a number of rivers and streams were stocked this week**). Flows continue to moderate in many areas but are still on the high side (see *stream flow graphic on page 4*). Remember that the smaller streams and tributaries will generally drop the quickest. **For real time stream flow data from 68 USGS gauging stations you can check the [USGS web site](#).**

Although flows are generally higher than typical levels, anglers are finding improving action and less difficult fishing on a number of rivers and streams. Some places reporting some action include the Jeremy River, Yantic River, Muddy River, Hammonasset River, Salmon River, Fivemile River, Leadmine Brook and the Farmington River (high, but at least a few intrepid anglers are catching some nice fish, upstream areas a bit more comfortable for fishing). For fly guys, find a nice comfy hole back of a bend and go deep or fish close to shore out of the main current. Nymphs (Copper Johns, Hare's ears working) and streamers (Wooly buggers are generally a good choice). Bead heads and weighted tips are helpful.

**Freshwater Fishing Forecast**

<b>TROUT</b>	Rivers/Streams	★ ★ ★ ★ ★
	Lakes/Ponds	★ ★ ★ ★ ★
<b>BASS</b>		★ ★ ★ ★ ★
<b>PANFISH</b>		★ ★ ★ ★ ★
<b>CHANNEL CATFISH</b>		★ ★ ★ ★ ★
<b>WALLEYE</b>		★ ★ ★ ★ ★
<b>PIKE</b>		★ ★ ★ ★ ★
<b>COMMON CARP</b>		★ ★ ★ ★ ★

WWW.CT.GOV/DEEP/FISHING 860-424-FISH (3474)

**Farmington River** - Anglers willing to float with (and not fight) the flows are finding some nice fish, especially with larger sized nymphs and streamers. West Branch flows continue on the high side currently, 709 CFS at Riverton plus an additional 334 CFS from the Still River (flows may increase on Sunday depending on rainfall amounts). Anglers will have to work for their fish, creativity in fishing spots may be a plus.

**Hatches/patterns.** Even the typical mid-April hatches/patterns have not really shown up in any numbers yet (high flows and cool days). Maybe something on Saturday if the weather hits the 70's. Insects that should be popular with the trout include Blue Wing Olive, Hendrickson (needs to get a bit warmer), Winter/Summer Caddis, Stonefly nymphs, Midges and Blue Quill. Nymphs (#18-22) are always a good go-to fly, try Bead Head, Midge Pupa, Brassie, Zebra Midge or Copper John patterns. Streamers are also a good option (Hare's ear, Pheasant Tail, White Zonkers & Buggers (#4-12) as well as Muddlers, Mickey Finn (especially for Pete!), Grey or Black Ghost).

**Housatonic River** – Fishing has been good at those few times when flows have moderated some, however with rain forecast for Sunday, conditions for late in the weekend and early next week may again be challenging and difficult. Flows have been dropping since Tuesday to more fishable levels, currently 2,320 CFS at Falls Village and 3,730 CFS. Anglers should call the **FirstLight Power Resources flow line at 1-888-417-4837 for updated river information or check the [USGS website](#)** for up to date real time streamflow data from a number of USGS gauging stations including two on the upper Housatonic River.

**Hatches/patterns.** Typical patterns for mid-late April are still in play, including March Brown (#10-12), Pheasant Tail (#12-18), Stoneflies (#6-10), Pheasant Tails (#14-20), and Black Stoneflies (#18-22). Try Mop Flies and Egg Patterns to hit some of the recently stocked browns. Look for Hendriksons soon. Nymphing (try Bead Head, Midge Pupa or Copper Johns) and streamers (such as White/Yellow Zonkers or Woolly Buggers) are good options.

**TROUT- LAKES & PONDS** – Fair to good reports from Black Pond (Middlefield), Rogers Lake, Amos Lake, Beach Pond, Long Pond, Bigelow Pond, Hewitt Fly Pond, East Twin Lake, Squantz Pond and West Hill Pond. Mashapaug Lake has been slow.

Fishing at the Trout Parks continues to be generally fair to good with the best reports from Mohegan Park Pond, Chatfield Hollow, Wharton Brook, and Valley Falls Park Pond.

**TROUT- Stocking update for the week of 4/29 – 5/3.** Note that stockings can also be found in our [current stocking report](#) or by using the [interactive trout stocking map](#).

#### RIVERS AND STREAMS:

- In **eastern Connecticut**; Mount Misery Brook, Myron Kinnie Brook, Quanduck Brook, Choate Brook, Broad Brook, Moosup River, Blackwells Brook, Indiantown Brook, Pachaug River, Scantic River (lower & upper), Furnace Brook (Stafford), Still River (Eastford), Hunts Brook, Eightmile River, East Branch Eightmile River, Latimer Brook, Susquetonscut Brook, Yantic River (including the TMA), the Willimantic River (above the TMA, below the TMA, and the TMA stocked), Natchaug River, Salmon River (including the TMA) Coginchaug River and Dickenson Creek were stocked.
- In **western Connecticut**; the Weekeepemee River, Nonewaug River, East Branch Naugatuck River, West Branch Naugatuck River, Macedonia Brook, Mill River (Hamden, areas upstream of TMA and



The Spanish Edition of CT's Fishing Guide hit the shelves this week. Here is a [list of locations to get a hard copy](#) and it is [online](#).

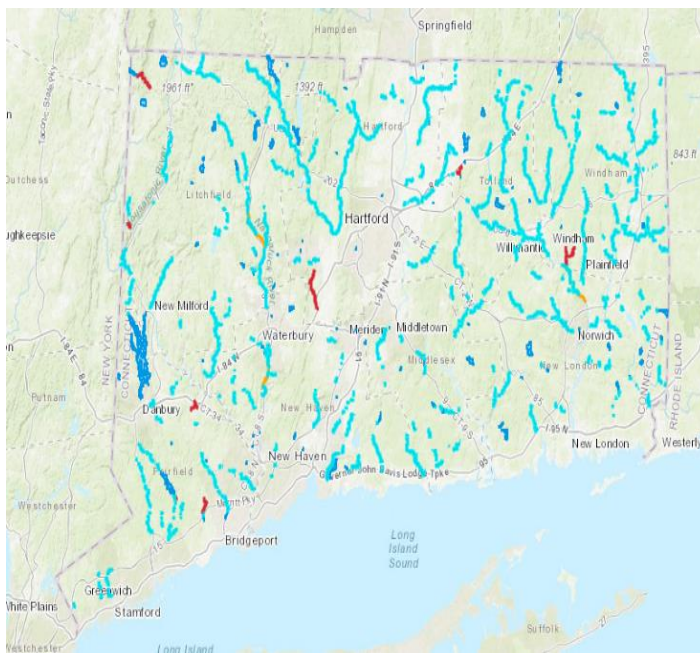
downstream of TMA stocked), Muddy River, East Branch Salmon Brook, West Branch Salmon Brook, Butternut Brook, Bantam River (inlet and outlet), Saugatuck River TMA, Pequonnock River (Trumbull including Trumbull Basin State Park, Bridgeport), Pequabuck River (Rockwell Park/Boulevard), Pequonnock River (Beardsley Park section), lower Saugatuck River and the Pomperaug River were stocked.

**LAKES AND PONDS:**

- In **eastern Connecticut**; Moosup Pond, Billings Lake, Hewitt Fly Pond, Amos Lake and Millers Pond were stocked.
- In **western Connecticut**; Squantz Pond, Starret Pond, Highland Lake, Christensen’s Pond and Twin Brooks Pond were stocked.

**TROUT PARKS:** the Natchaug River Trout Park was stocked.

**COMMUNITY FISHING WATERS:** Beaver Park Pond/lagoon, Rowan’s Pond (Butternut Park Pond), Lake Wintergreen, Pickett’s Pond and Bunnells Pond (Beardsley Park Pond) were stocked.



**INTERACTIVE TROUT STOCKING MAP & E Regulations**

Anglers can see the number of days since our last trout stocking by using our interactive trout stocking map([www.ct.gov/deep/troutstockingmap](http://www.ct.gov/deep/troutstockingmap)). Give it a go.

**CT Fishing Regulations are online** at <http://www.eregulations.com/connecticut/fishing/>

**LARGEMOUTH BASS.** Despite the gray, somewhat cool days, lots of reports of prespawn fish, fish moving into shallow coves and even some beds. Largemouth fishing has been generally fair to good (at some places), with reports from Amos Lake, Gardner Lake, Long Pond, Rogers Lake, Black Pond (Middlefield), Lake Lillinonah, Dog Pond, Candlewood Lake (fairly typical spring largemouth action, not that many but some big ones including a 7.77 lb lunger for a recent tournament) and Highland Lake.

**Tournament angler** reports are from Aspinook Lake (fair, 3.38 lb lunger), Hopeville Pond (fair action at best, but the fish caught were good size with a nearly 2 lb per fish average weight and a 4.65 lb lunger), Pattagansett Lake (tough, 2.89 lb lunger), Powers Lake (slow, 2.89 lb lunger), Quaddick Lake (fair for most, good for some, 6.13 lb and 5.1 lb lungers), Candlewood Lake (fair, 7.77 lb and 5.93 lb lungers), Highland Lake (fair to good for most, 5.92 lb lunger), Silver Lake (fair, 3.57 lb lunger) and Lake Lillinonah (fair at best, fish for one club averaged just 1.3 lbs apiece).

**SMALLMOUTH BASS.** Smallmouth are being caught at Candlewood Lake, Lake Lillinonah and Highland Lake. **Tournament angler** reports are from Candlewood Lake (good, 5.72 lb, 5.69 lb, 5.42 lb, 5.25 lb and 4.75 lb lungers) and Highland Lake (slow).

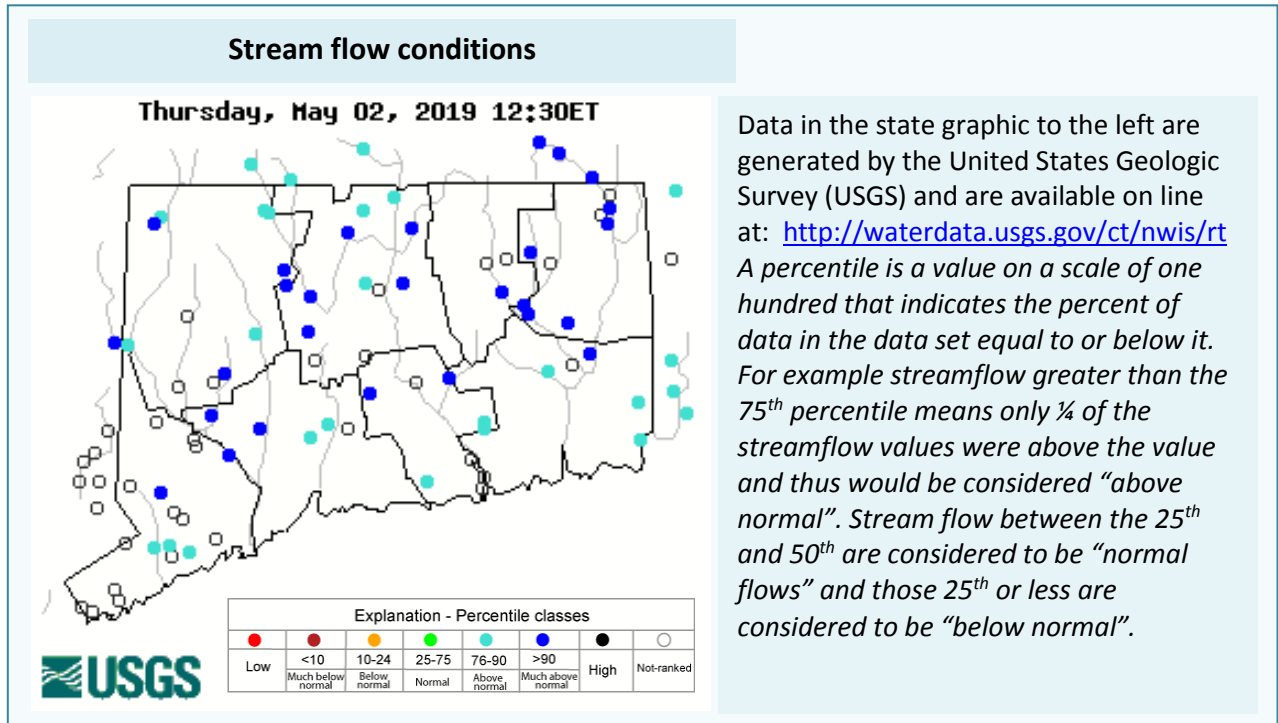
**Tournament angler** reports are from Highland Lake (slow to fair), Lake Lillinonah (fair to good with some nice fish caught including 5.06 lb and 4.56 lb lunger smallies, average weight of 2.7 lbs per smallmouth for one club) and Candlewood Lake (fair to good action, with lots of 3-5 lb smallies), Some monstrous bags reported from a couple of recent tournaments with 8 fish team creel limits, including a 38.99 lb bag and several more in the 30-38 lb range.



**BLACK CRAPPIE** are providing some action in a number of areas throughout the state.

**CHAIN PICKEREL** action has been good in many southeastern CT lakes and ponds.

**CONNECTICUT RIVER.** The Connecticut River is beginning its spring decent. It is still cold and turbid, at 59,500 CFS at Thompsonville. Best bets are to do some exploring of backwater coves and flooded meadows – bowfin, large carp, and pike can be cruising these typically dry areas. American Shad and Striped Bass fishing should be showing signs of improving this week.



**NOTES & NOTICES:**

**STORM DAMAGE REMINDER.** Due to damage from storms in May, Sleeping Giant State Park (including the Sleeping Giant TMA) remains closed and the TMA was not stocked with trout this spring.

**CANDLEWOOD LAKE (boat launch closure).** The Squantz Cove state boat launch on Candlewood Lake will be closed for the removal of hazard trees on Monday, May 6. The launch is expected to reopen for Tuesday, May 7.

**COLEBROOK RIVER LAKE (boat launch).** The boat launch at Colebrook River Lake is open but may be subject to occasional closures during times of very high water levels in the lake. Boaters can call the U.S. Army Corps of Engineers (USACE) at 860-379-8234 for updated information.

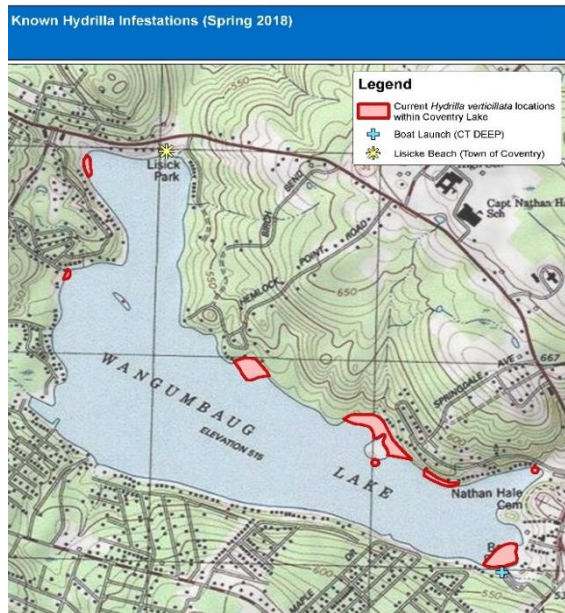
**CONNECTICUT RIVER (invasive species alert).** In 2016 hydrilla was found in the main stem Connecticut River in Glastonbury (near Glastonbury’s Riverfront Park & Boathouse). **Hydrilla has now spread throughout the river and can be found in numerous areas.** See the Coventry Lake entry on the next page for what river users should do to prevent spread of this invasive plant to other waterbodies.

**COVENTRY LAKE (invasive species alert).** Hydrilla, a very highly invasive aquatic plant, has been found growing in Coventry Lake. All lake users should take extra care to check and clean their boats (including canoes, kayaks and rowing sculls), trailers, and fishing equipment before leaving the boat launch, or leaving the lakeshore.

**ROGERS LAKE (rowing regatta).** A high school rowing event is scheduled for **Wednesday, May 8, from 2:00 pm to 7:00 pm.** Boaters should use additional caution on the lake.

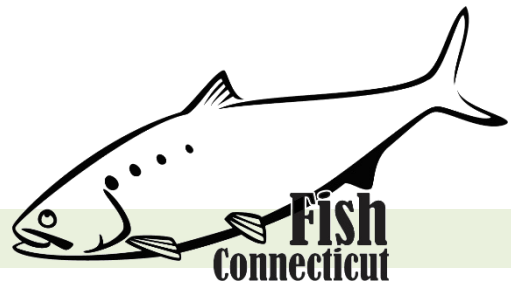
**SQUANTZ POND (boat launch closure).** The Squantz Pond state boat launch on Squantz Pond is currently closed for the removal of hazard trees. The launch is expected to reopen for Monday, May 6.

**LAKE WARAMAUG (rowing regatta).** A high school rowing event is scheduled for **Sunday, May 5, from 8:00 am to 5:00 pm.** The area and lake are expected to be congested.



Known locations of hydrilla at Coventry Lake (Wangumbaug Lake). Boaters should avoid these areas noted with red to avoid fragmenting and spreading hydrilla.

## MARINE FISHING REPORT



Surface water temperatures in Long Island Sound (LIS) are in the lower 50's °F. Check out the following web sites for more detailed water temperatures and marine boating conditions:

<http://www.mysound.uconn.edu/stationstat.html>

[http://marine.rutgers.edu/mrs/sat\\_data/?nothumbs=1](http://marine.rutgers.edu/mrs/sat_data/?nothumbs=1)

<http://www.ndbc.noaa.gov/>

<http://www.wunderground.com/MAR/AN/330.html>

**STRIPED BASS** fishing continue to be very good around the NEW Moon in all of the tidal rivers along the Connecticut shoreline. **Lots of schoolies** and there are also some keepers in the mix as well (49.5 inch striped bass from the lower CT and upper Housatonic Rivers). Striper spots include the Pawcatuck River, Mystic River, Thames River, Niantic River, lower Connecticut River (**DEEP Marine Headquarters fishing pier and Dock and Dine**), Black Hall River, **New Haven Harbor** (Sandy Point), the Sound School Fishing Pier, Housatonic River and Norwalk Harbor including the islands. **Sand and blood worms have been working the best, especially in turbid waters around the high tide.** Casting swimming lures, small jigs (Chartreuse color) with twister tails, soft baits, and Kastmasters and other metal lures will also work. Fishing should get better as we approach the magical 55°F mark! The top-water fishing has been fantastic...go out enjoy some of the best fishing in New England.

**WINTER FLOUNDER** fishing remains slow but improving in the Poquonock River at Bluff Point State Park, Niantic River, The Brothers, Jordan Cove, lower Saugatuck River, **Calf Pasture Beach area, Norwalk Islands (Cockonoe) and the channels in Norwalk Harbor**. Other flounder spots include the lower Mystic River, and the mouth of the Thames River in the Pine Island area including Baker Cove.

**WHITE PERCH** fishing is good for these tasty panfish in most of the tidal rivers and coves along the Connecticut shoreline. Perch spots include the Pawcatuck River, Mystic River, Thames River, upper Niantic River, lower Connecticut River (DEEP Marine Headquarters fishing pier), Black Hall River, Lieutenant River, North/South Cove and Hamburg Cove. Shrimp and small worms are the key to success.

**SCUP is OPEN** – There are plenty of scup in the Sound. The spawning migration has started early this year. Fishing is fair overall, but improving along with the weather. Time to plan a trip on the many wonderful party/charter boats in CT. [CT Party Boat Association](#). Porgy fishing has also been reported at these shore fishing locations: Rocky Neck State Park, Meigs Point Hammonasset State Park and Fort Trumbull State Park. Locate your favorite [Enhanced Shore Fishing Opportunities](#) for these excellent eating “Reef Slammers”. These “panfish of the sea” are easily caught on sandworms/cut squid or any other small piece of bait. Contact your [local bait and tackle shop](#) for updated fishing information.

**SUMMER FLOUNDER** fishing season opens May 4 to September 30. Time to get the boat, and fishing gear ready for some phenomenal early season fluke fishing. [CT Bait & Tackle Shop List](#)

**WEAKFISH** have also arrived in Long Island Sound! Look for these awesome eating fish in Guilford/New Haven Harbor over to the Milford/Stratford area along with the Peconics (NY).

---

**CONNECTICUT STATE BOUNDARY LINE IN LONG ISLAND SOUND.** Anglers please note, although Connecticut has reciprocity with neighboring states (New York, Rhode Island, Maine and Massachusetts), residents of Connecticut are required to have a CT Resident Marine Waters Sport Fishing License to fish in the Marine District.

**SHORE FISHING SPOTS & TIDE TABLE INFORMATION** To find a saltwater shore fishing spot close to where you live, go to the following website: <http://www.lisrc.uconn.edu/coastalaccess/>.

For **ENHANCED OPPORTUNITY SHORE FISHING** sites and other fishing information including a site map go to the following website <http://www.depdata.ct.gov/maps/saltwaterfish/map.htm>.

**CT TIDE INFORMATION** can be found on page 64 of the [2019 CT Fishing Guide](#).

---

*For Current Connecticut Recreational Fishing Regulations: Anglers should consult the 2019 Connecticut Fishing Guide which is now available at most Town Clerks Offices, DEEP offices and at tackle stores selling fishing licenses. Current regulations, electronic versions of the Fishing Guide and additional information can all be accessed on the DEEP website at: [www.ct.gov/deep/fishing](http://www.ct.gov/deep/fishing).*

### [CAUGHT A TROPHY FISH - MARINE TROPHY FISH AWARD PROGRAM AFFIDAVIT](#)

The Connecticut Department of Energy and Environmental Protection is an Affirmative Action/Equal Opportunity Employer that is committed to complying with the requirements of the Americans with Disabilities Act. Please contact us at (860) 418-5910 or [deep.accommodations@ct.gov](mailto:deep.accommodations@ct.gov) if you have a disability and need a communication aid or service; have limited proficiency in English and may need information in another language; or if you wish to file an ADA or Title VI discrimination complaint.

---

#### DEEP WEEKLY Fishing Report



Connecticut Department of  
**ENERGY & ENVIRONMENTAL PROTECTION**

79 Elm Street, Hartford, CT 06106

[www.ct.gov/deep](http://www.ct.gov/deep)